

INVESTMENT PROPOSAL AQMOLA REGION



Burabay Resort



- ✓ Identified by the Head of State K.K.Tokayev as one of the three centres of tourism development in the Republic of Kazakhstan
- ✓ Included in the top 10 priority tourist areas
- ✓ No. 1 one of the national parks visited by tourists in the Republic of Kazakhstan
- ✓ The state national natural park «Burabay» is located in the territory of the Republic of Kazakhstan.
(total area 129.5 thousand hectares)

number of visitors **1,3** million people



234 the placement object
(for 11,000 beds)

provision of
services in the
amount of



27,7 billion
tenge

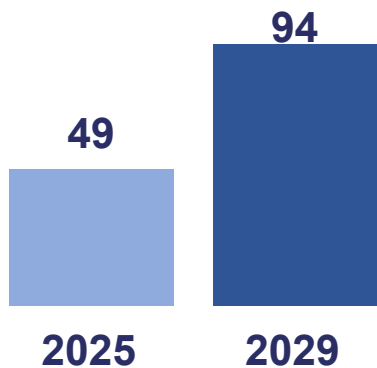


Target indicators of the Comprehensive Development Plan Shchuchinsk-Borovoe resort area for 2025-2029



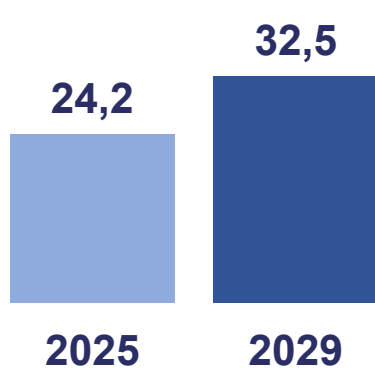
Number of incoming tourists

(thousand people)



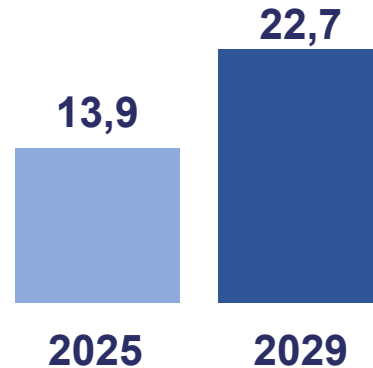
Employment in the field of tourism

(thousand people)



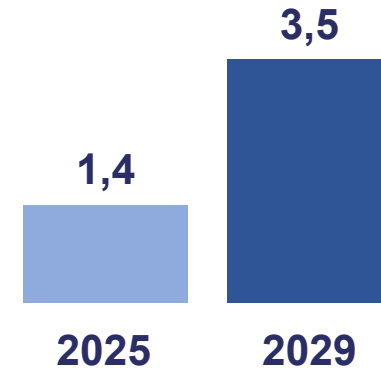
Private investment volume

(billion tenge)



The share of tourism in the region's economy

(%)



A large, dark stone sculpture of a man with a beard, carrying a heavy load on his back. The sculpture is set on a rocky, uneven ground. In the background, there is a calm lake and distant mountains under a cloudy sky. The overall scene is dimly lit, suggesting dusk or dawn.

Projects requiring investment within the framework of the Comprehensive Plan for the development of the Shchuchinsk-Borovoe resort zone for 2025-2029



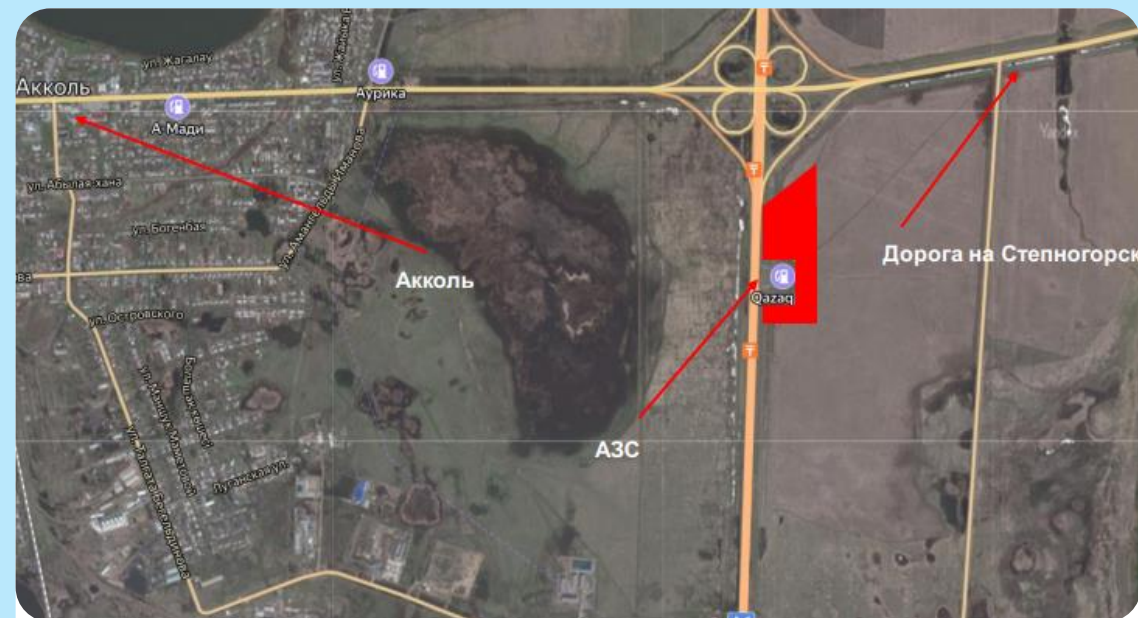
Construction of a roadside service on the Astana-Burabay highway (Akkol district)



The proposed infrastructure of the project:

- ✓ oil
- ✓ warm toilets
- ✓ retail outlets
- ✓ public catering establishments
- ✓ parking, car wash
- ✓ secure parking

Geographical location



There is a land plot of 9.5 hectares on the Astana-Petropavlovsk highway

Engineering infrastructure:

Power supply – 2,2 km
Water supply – 3 km
Water disposal – no (septic)
The highway – 120 m
(from the Astana– Petropavlovsk highway)



Reconstruction of the racetrack on the Astana-Borovoe highway in the Cadet corps area



- The proposed infrastructure of the project:**
- ✓ racing circle
 - ✓ the cockpit area
 - ✓ indoor grandstand building
 - ✓ veterinary unit
 - ✓ the stable
 - ✓ public catering establishments
 - ✓ secure parking

Geographical location



There is a land plot of 30 hectares along the Shchuchinsk bypass highway

Engineering infrastructure:

Power supply – 4 km
Water supply – 4 km
Water disposal – no (septic)
The highway – 50 m



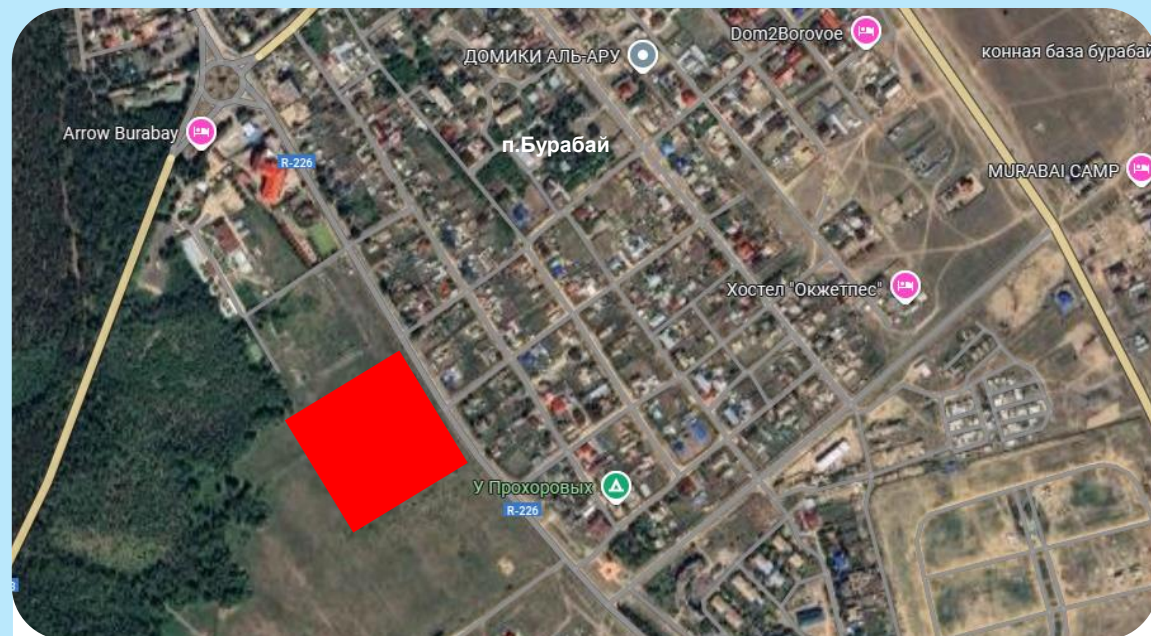
Construction of a summer sports and entertainment stadium in the village of Burabay



The proposed infrastructure of the project:

- ✓ game modules
- ✓ swing
- ✓ carousel
- ✓ roller coasters
- ✓ amphitheater
- ✓ park area
- ✓ retail outlets

Geographical location



There is a 2-hectare plot of land behind the ring road and the Bereke Hotel

Engineering infrastructure:

Power supply – 300 m
Water supply – 300 m
Water disposal – 1 km
The highway – 130 m (to Kenesary street)



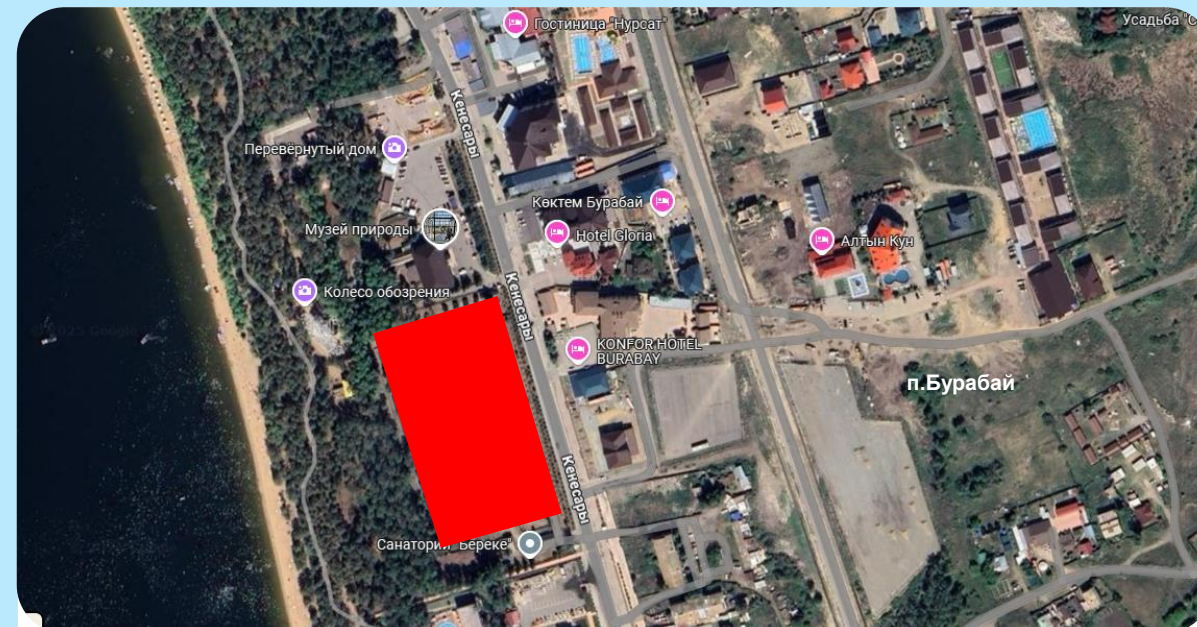
Construction of a children's entertainment complex and a theme park in the village of Burabay



The proposed infrastructure of the project:

- ✓ game modules
- ✓ swing
- ✓ carousel
- ✓ roller coasters
- ✓ attractions
- ✓ park area
- ✓ retail outlets

Geographical location



There is a plot of land with an area of 1.2 hectares on the site of the zoo

Engineering infrastructure:

Power supply – 100 m
Water supply – 100 m
Water disposal – 1 km
The highway – 50 m (to Kenesary street)



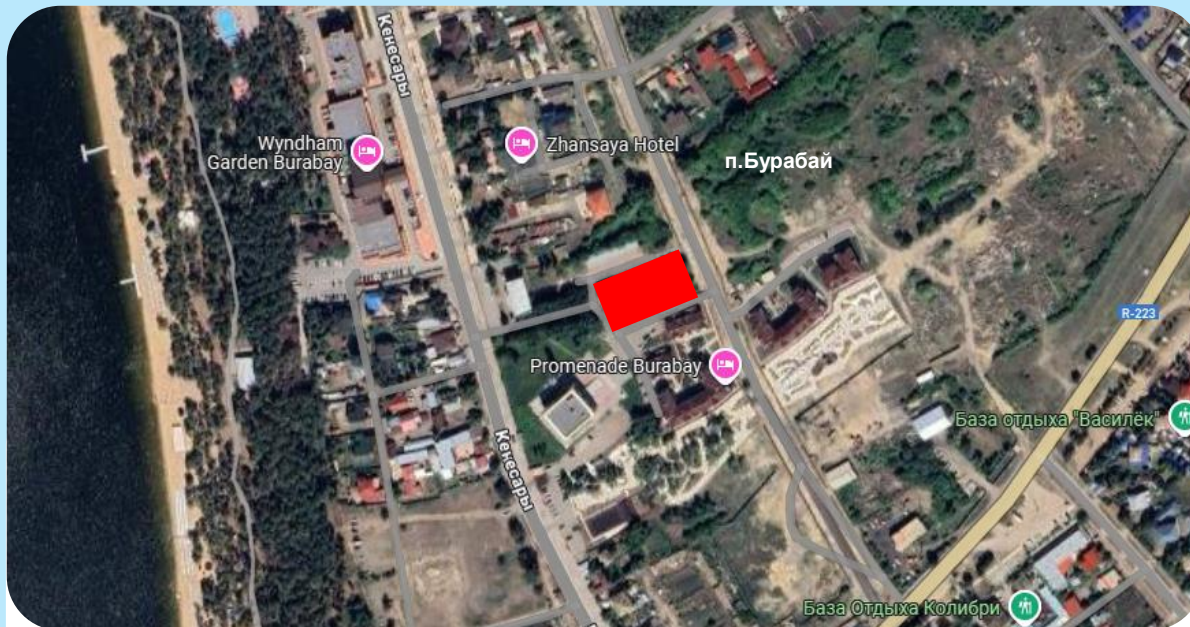
Reconstruction of the building for the historical museum at 45a Kenesary Street



The proposed infrastructure of the project:

- ✓ exhibition halls
- ✓ conference room
- ✓ exhibition hall
- ✓ storage facilities
- ✓ offices
- ✓ secure parking

Geographical location



*There is a plot of land with an area of 0.2 hectares
on the site of the old RHC*

Engineering infrastructure:

Power supply – yes
Water supply – yes
Water disposal – yes
The highway – yes (to Kenesary street)

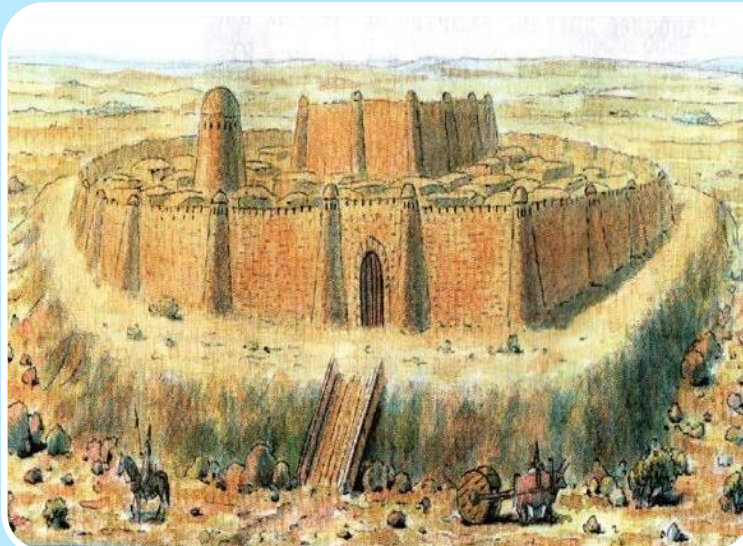


Improvement of tourist routes, taking into account the historical heritage of the resort

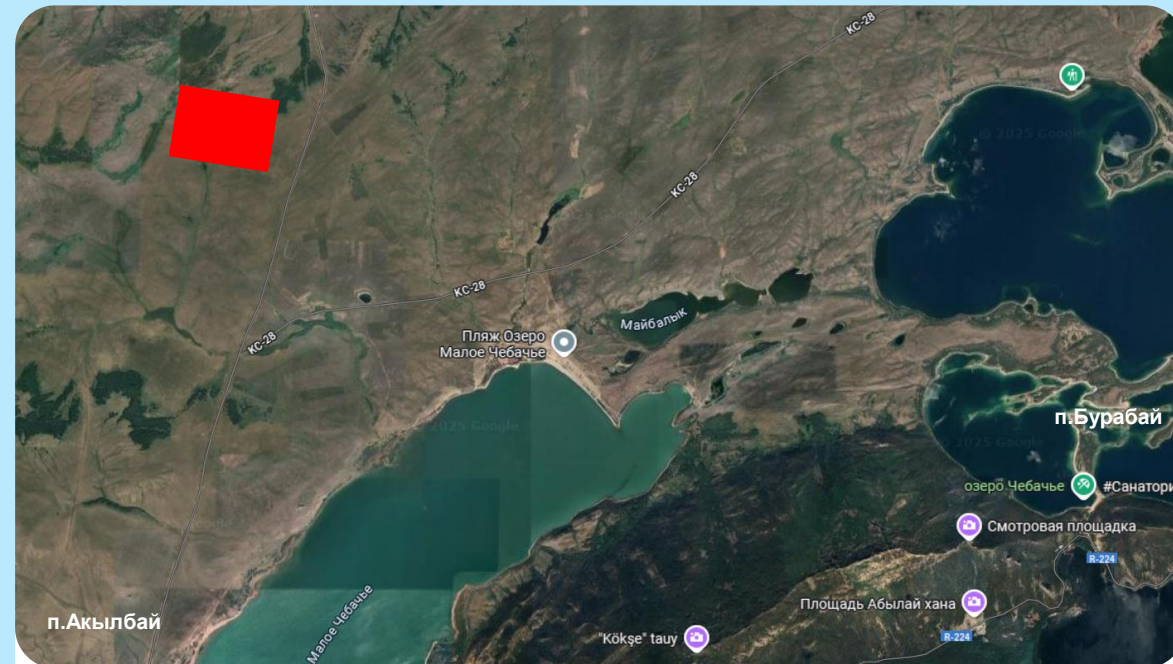
CREATION OF THE ARCHAEOLOGICAL COMPLEX «ABAKAI»

In 2024, Akmola archaeological expedition began work on the territory of the complex Abakai (Burabai district). The monument located among picturesque landscapes is a remarkable archaeological and cultural site. Its peculiarity lies in the fact that for centuries this place was used as a sacral space where symbolic burials and sacrificial and memorial rites were performed.

The archaeological heritage represented in the Abakai complex has not only scientific but also spiritual value, which makes it a promising object for cultural tourism.



Geographical location



There is a 3 hectares plot of land on the territory of the Abakai complex

Engineering infrastructure:

Power supply – 7 km

Water supply – 7 km

Water disposal – 7 km

The highway – 100 m (to the bypass road)



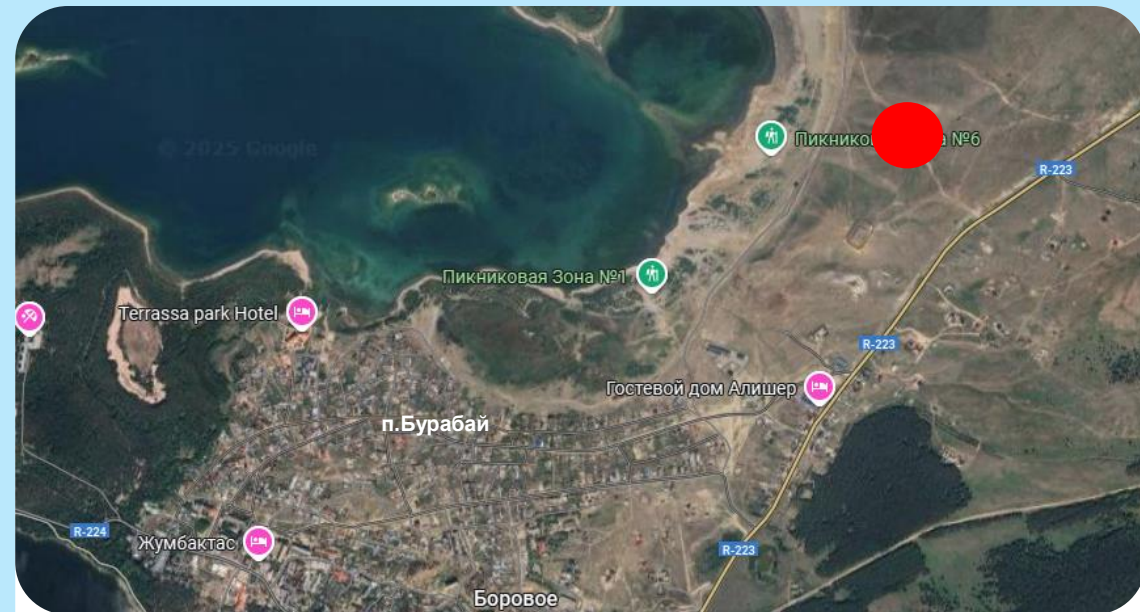
Organization of ethnoaula in the village «The Khan's Red Tree»

According to oral folk sources, in the vicinity of Kokshetau there were two squares associated with the name of the great Abylai khan: «Yilken zhane Kishi alaңy». There are reasons to assume that the main square of Abylai was located in the area «Khannyң Kyzyl agashy». Here the ruler held kuryltai, military gatherings, mobilisation and other large-scale events.

The organisation of a large-scale ethno-aul can become a living exposition, recreating the atmosphere of Abylai Khan's era, with yurts, craft workshops, national cuisine and demonstration of rituals.



Geographical location



*There is a land plot of 10 hectares in the area
«The Khan's Red Tree»*

Engineering infrastructure:

Power supply – 2 km

Water supply – 2 km

Water disposal – no (septic)

The highway – 500 m (to the Burabay– Nauryzbai Batyr road)



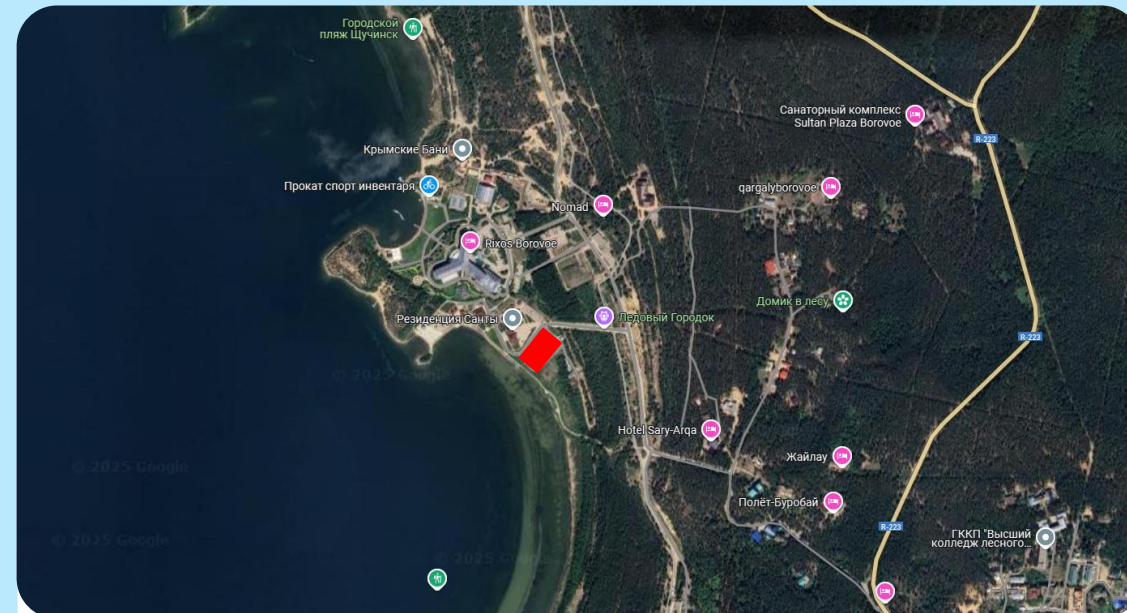
Construction of a modern visitor center on the territory of the Burabay resort



The proposed infrastructure of the project:

- ✓ the visit center
- ✓ public catering establishments
- ✓ souvenir shop
- ✓ secure parking

Geographical location



There is a plot of land with an area of 1 hectare on the shore of Lake Shchuchye

Engineering infrastructure:

Power supply – 300 m
Water supply – 300 m
Water disposal – 6 km
The highway – 100 m



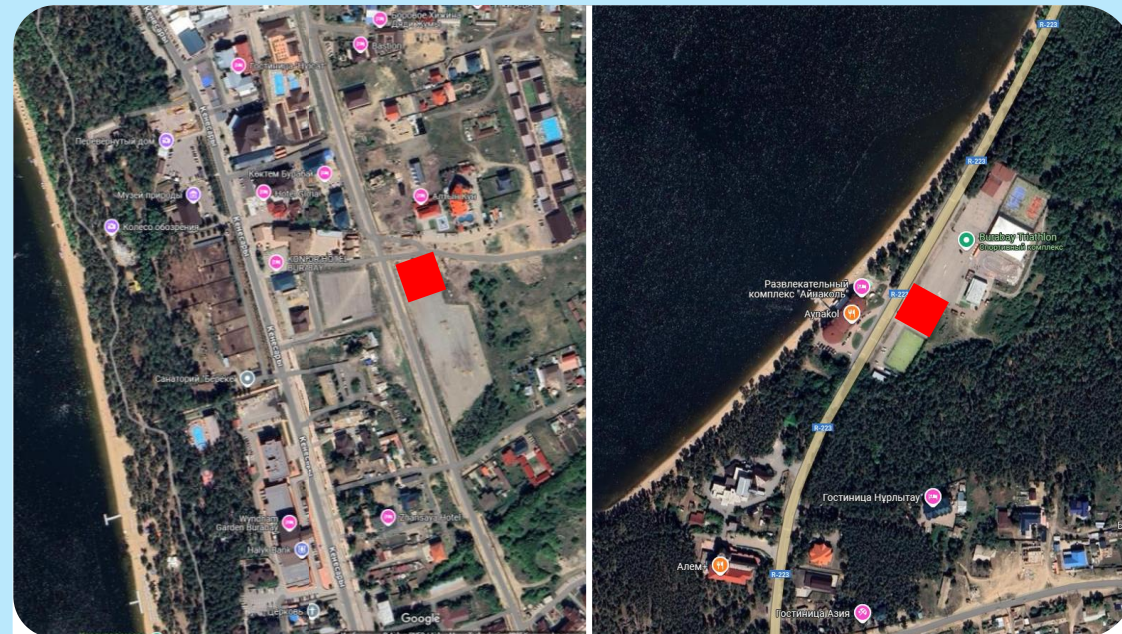
Construction of charging stations for electric vehicles in the city of Shchuchinsk and the village of Burabay



The proposed infrastructure of the project:

- ✓ power supply
- ✓ control board
- ✓ charging cable
- ✓ secure parking

Geographical location



In the parking areas along Kulager 33b street and near the Ainakol Hotel

Engineering infrastructure:

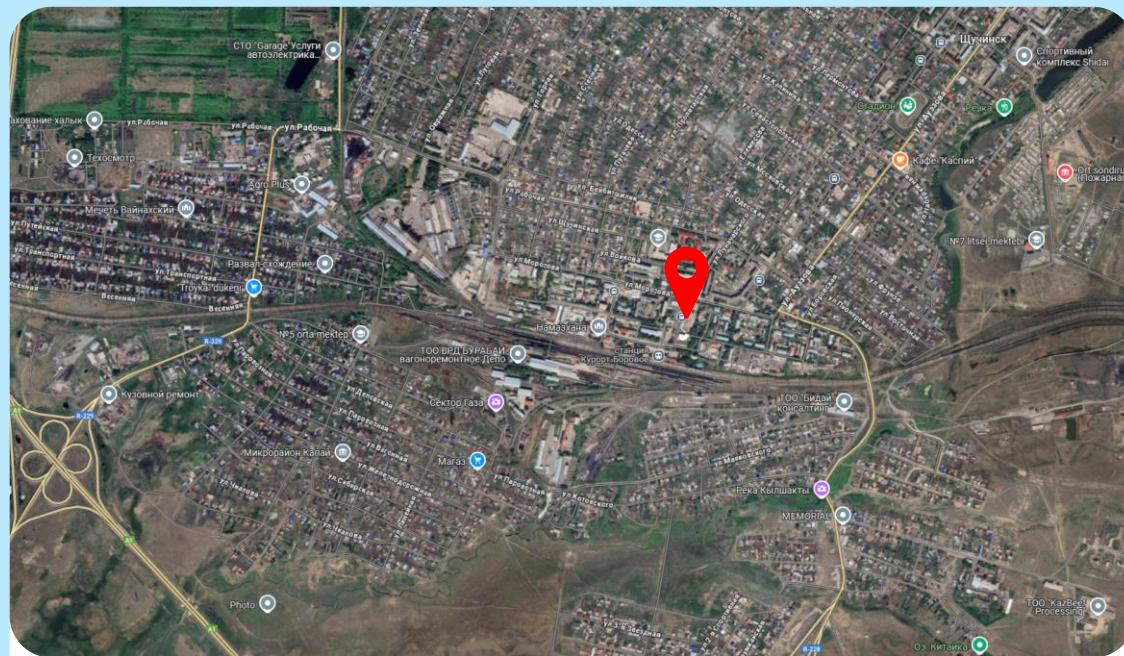
Power supply – 100 m
Water supply – 100 m
Water disposal – 100 m
The highway – 50 m



Launch of shuttle buses on the territory of the Burabay resort



Geographical location



On the territory of the bus station of Shchuchinsk

Engineering infrastructure:

Power supply – 50 m

Water supply – 50 m

Water disposal – 50 m

The highway – 100 m



Launch of rental (carsharing) of electric vehicles at the airport and railway station of Kokshetau



The proposed infrastructure of the project:

- ✓ administrative center
- ✓ cars of different classes
- ✓ garage
- ✓ secure parking

Geographical location



On the territory of the airport and the railway station of the city of Kokshetau



Measures of state support

The Government of the Republic of Kazakhstan provides the following measures:

Conclusion of an investment contract

In order to receive investment preferences, it is necessary to conclude an investment contract for the implementation of an investment project with the Investment Committee of the Ministry of Foreign Affairs of the Republic of Kazakhstan for a period of no more than 5 years. A program is attached to the contract, which reflects all stages of the construction of the facility. After the facility is put into operation and the obligations are fulfilled, the contract ends.

In accordance with the conditions for determining priority investment projects in the TOP territories of the country, the following benefits and preferences are provided for investors (the amount of investments is at least \$ 1480.0 thousand)

Tax and customs preferences

0%

Corporate income tax
in the first 10 years

0%

Land tax
in the first 10 years

0%

Property tax
in the first 8 years

0%

Customs duties and VAT
on imports (term of the
contract)

During the term of the contract, the investor is exempt from customs duties (for a period of no more than 5 years), and also receives a full-scale grant (land plot). After the completion of the contract, the preferences are terminated, and the land plot becomes the property of the investor.

State support measures for investors provided for the construction of hotels

On the line of the Development Bank of Kazakhstan

a loan is issued at an interest rate of no more than 7% per annum for up to 20 years, with the investor's own participation at the level of 20% of the project cost

For reference: for 2024-2025, the Development Bank of Kazakhstan provides for the allocation of a budget loan for the Development Bank of Kazakhstan in the amount of \$ 300 million (170 million in 2024 and 130 million in 2025) for these purposes. At the same time, in 2024, as of August, loans in the amount of \$ 30 million were actually issued.

On the line of National Managing Holding «Baiterek»

entrepreneurs who build hotels with an international franchise can subsidize a bond loan for a period of 10 years at 6% per annum

For reference: the borrower sells bonds on the market for a period of no more than 10 years. The nominal value of the bond should not exceed 14 million \$. For its part, «Damu» Entrepreneurship Development Fund» JSC subsidizes the interest rate on the bond loan and reduces the borrower's burden to 6% per annum.



Measures of state support within the framework of a Single comprehensive program

Akimat of Akmola region provides the following measures:

Subsidies and guarantees are provided in the following areas

Micro entrepreneurship

Subsidies and guarantees	Guarantees
The maximum loan amount is up to \$40 thousand	Guarantee up to 85% of the loan amount
The rate for private business entities is 7-8%	

Large business in services (for Shchuchinsk-Borovskaya resort area)

Subsidies	Guarantees
The maximum loan amount is up to \$30 million	The maximum loan amount is up to \$7 million
Replenishment of working capital - up to \$10 million	Replenishment of working capital - up to \$2 million
The rate for private business entities is 8-10%	Guarantee of up to 50% of the loan up to \$7 million
Services - 9%	

Entrepreneurship in small towns and rural areas

Subsidies	Guarantees
The maximum loan amount is up to \$3 million	The maximum loan amount is up to \$3 million
Replenishment of working capital - up to 1 million	Replenishment of working capital - up to \$1 million
The rate for private business entities is 7%	Guarantee of up to 50% of the loan up to \$3 million
Services, trade - 10%	

The operator is «Damu» Entrepreneurship Development Fund» JSC

Summing up the missing infrastructure

Construction (reconstruction) of the missing engineering infrastructure in the amount of no more than \$ 2 million

Conditions

The volume of investments in the project is not less than \$400 thousand

The degree of readiness for the construction of projects is at least 30%

Rules for reimbursement of part of the costs of business entities in the field of tourism

Subsidizing **10% of the costs** of business entities in the construction/ reconstruction of tourist facilities



Cost recovery of **25%** for the purchase of a vehicle with more than 8 seats



Subsidizing **10% of the costs** of business entities in the construction of roadside services



Reimbursement of costs **(\$166.6)** for the maintenance of sanitary and hygienic units





Contact information

Department of Tourism of Akmola region



Support and support of investment projects. Assistance in finding a land plot and completing the necessary documents



+7 (7162) 72-30-26



+7 (7162) 72-15-54



tourism@aqmola.gov.kz

Additional resources



Information and analytical support of projects in the tourism industry of Kazakhstan.



www.qaztourism.kz



Information on government support measures for small and medium-sized businesses.



www.damu.kz



Information on the conclusion of a public-private partnership, as well as analytical and expert support.



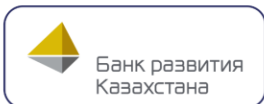
www.kzppp.kz



«One window» for the investor. Support for potential foreign investors on all issues, including assistance in obtaining financing, permits and other government services.



www.invest.gov.kz



Medium- and long-term financing of investment projects in the non-primary sector of the economy.



www.kdb.kz